

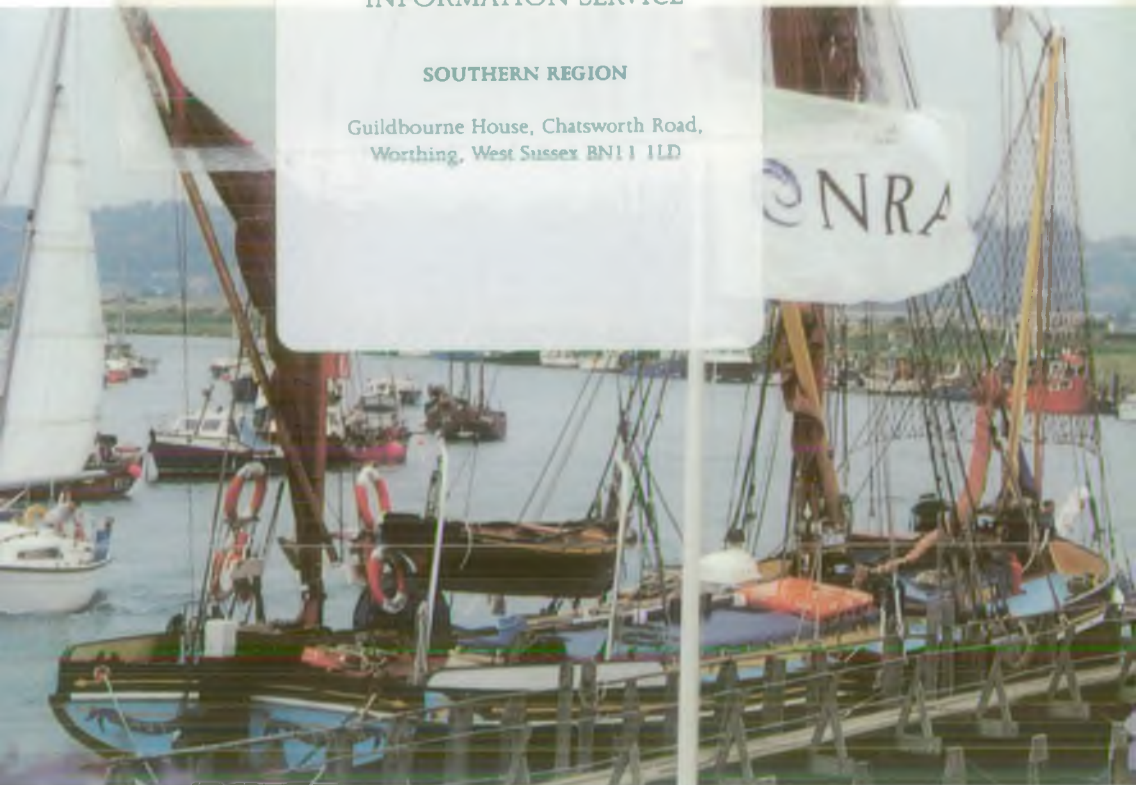


ENVIRONMENT AGENCY

NATIONAL LIBRARY &
INFORMATION SERVICE

SOUTHERN REGION

Guildbourne House, Chatsworth Road,
Worthing, West Sussex BN11 1LD



NRA

National Rivers Authority

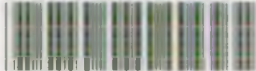
Southern Region

Regional Office



Awarded for excellence

ENVIRONMENT AGENCY



054668





Landgate Bistro

5/6 Landgate, Rye
East Sussex TN31 7LH
Telephone: (01797) 222829

*Fresh local fish, game, meat and vegetables in season
Scallops, Squid, Eel, Monkfish, Mussels, Sole, Brill
Wild Duck, Hare, Pigeon, Rabbit, Local Lamb*

Open Tuesday to Saturday from 7.00pm



GOOD BEERS • LUNCHES • DINNERS • FINE WINES

The Union Inn

East Street, Rye, East Sussex
TN31 7JY
Rye (01797) 222334

15th Century Free House

The Press Inn

Free House

GUN GARDENS, RYE, EAST SUSSEX TN31 7HH

Tel: RYE (01797) 223248

*Under the Personal Management of the Owners
Dick and Babs Pearce since 1984*

For the very best in Ales, Lagers and Wines

*Acknowledged in most of the Good Pub and Food Guides for
Fresh Fish, Lamb and Game Dishes*

**STOP
PRESS**

1995 WHICH GOOD COUNTRY PUB GUIDE
ONE OF THE TOP 1,000 PUBS
IN ENGLAND, SCOTLAND AND WALES

Emma
Louise

105b High Street
RYE East Sussex
TN31 7JE
Tel: (01797) 224993
(01797) 223171
Fax: (01797) 224680

Ydeley
Stockists
Specialist in Hand
Block Printed Fabric
Gifts and Clothes



STRAND QUAY CAFE

Open 7 Days a Week
Angling Parties Welcomed
Earlier Opening on Request
Tel: (01797) 225935
Mobile: (01797) 211115

The
Old Forge Restaurant
24 Wish Street
200 metres from Strand Quay
Established in 1966 by the Chef Proprietor
Derek Bayntun
Ex-Seaman, Rye Harbour Sailing Club Member
Converted from the Original Forge
English Cuisine:
Specialities include Fresh Local Fish, Shellfish and
Chargrilled Steaks.
Recommended in 'Rough Guide to England' and
'Les Routiers'
Open for Dinner Tuesday to Saturday
and Lunch on Thursday,
Friday and Saturday
Tel: (01797) 223227

HAMILTON HOUSE

THE Gift Shop for that
something special ...
Hand-made Glass and Rugs,
Clocks, Cushions, Quilts,
Candles and Old Pine.
Beautiful Silver Jewellery
and so much more at ...



105 High Street, Rye
Tel: (01797) 222714

THE ROPE WALK • ARCADE • LAUNDRETTE

Open 7.30 am - 6 pm MON - SAT
and 8.30 am - 1 pm SUNS

Come and do your washing -
you won't get bored here!

We've around 30 Shops and
Services under one roof at
Rye's Indoor Shopping Centre



Proprietor:
Anne Smith

Step-In News
Unit 4
Rope Walk
Arcade
Rye
East Sussex
TN31 7AN
Telephone:
01797 225 443

The largest
supplier of loose
tobacco in the area

- Pipes
- Zippo Specialists
- Wind-proof
Lighters

QUAY COMMUNICATIONS

MOBILE PHONE SPECIALISTS

MOBILE PHONE SUPPLIERS

FULL ON SITE SERVICE & REPAIRS

DIGITAL GSM & ANALOGUE

FREE RE-CONNECTIONS

SPARES & ACCESSORIES



Mobiles:

0850 366115

0973 211115

**Open 7 Days A Week
8.00 am - 8 pm**

30 Wish Street, Rye

Tel: 01797 225935

Barbour

The best British clothing for the worst
British weather



Barbour® COUNTRY CLOTHING available from:

Pilkingtons

Footwear Specialists

21 Lion Street, Rye, East Sussex

Tel: Rye (01797) 223119

Cinque Ports Pottery

THE MONASTERY



*Follow the entire process of pottery being made
through our public gallery*

Viewing times 10am - 12pm and 1.30pm - 4.30pm weekdays

Showroom open 7 days a week. Telephone: Rye (01797) 222033

CINQUE PORTS POTTERY, RYE, SUSSEX, ENGLAND



DAVID SHARP CERAMICS
55 The Mint, Rye, East Sussex
TN31 7EN England
Tel: Rye (01797) 222620

Traditional Studio Pottery (Est. 1965) specialising in
Bird/Animal Figurines

Large Selection of House Names/Numbers signs
made to individual requirements

SHOWROOM OPEN 7 DAYS A WEEK

Mail Order Catalogue available from above address

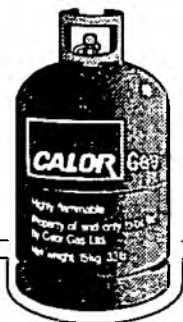
SEA CRUISERS of RYE

Well-Stocked Yacht Chandlers

* * *

A wide range of hardware including Rope, Hose,
Cleaners, Paints, Stainless Fastenings, etc. Clothing,
Calor and Camping Gaz. Boat and Outboard Sales
& Service all at:

SEA CRUISERS
WINCHELSEA ROAD
(01797) 222070



OPEN 7 DAYS A WEEK

OTHER USEFUL INFORMATION/CONTACT NUMBERS

| | | | | |
|--|--------------|------------------------------------|----------|--------------|
| Police: | 01797 222112 | Taxis: | Davies | 01797 222329 |
| Tourist Information Office at the Heritage Centre, Rye. | 01797 226696 | | Camber | 01797 225548 |
| | | | Rye Mtrs | 01797 223176 |
| Hospitals: (Acc. & Em.) Conquest | 01424 755255 | Rye Harbour Sailing Club | | |
| Buchanan (Natal) | 01424 422666 | Hon Sec E.C. Steele | | 01797 344645 |
| Doctors: | | Rye Boat Owners Association | | |
| Postengate Surgery | 01797 223333 | Chairman Clive Wall | | 01797 226634 |
| Jeelani & Part | 01797 223230 | Rye Harbour Nature Reserve | | |
| Dentists: | | Warden Barry Yates | | 01797 223862 |
| David Seeleys | 01797 222834 | Rye Water Ski Club | | |
| R. Deacon | 01797 223311 | Chairman A. Rabbit | | 01732 223862 |
| Samaritans: | 01424 436666 | Rye Windsurfing School | | |
| C.A.B.: | 01797 222293 | Manager M. Meadowcroft | | 01580 53438 |
| Social Services: | 01797 226922 | | | |
| Veterinary Surgeons: | 01797 222265 | | | |

WEATHER INFORMATION

Marine call for area Shoreham to North Foreland can be obtained by dialling 0891 500 456. Fax forecast for the same area dial 01336 400 456.

3-5 day planning dial 01336 400471 Fax 0891 500992 Tel

Satellite pictures can be obtained by dialling 01336 400 499

Weather forecasts can also be obtained from Dover Coastguard (VHF ch 69) or Rye Harbour office Tel: 01797 225225 (VHF Ch 14).



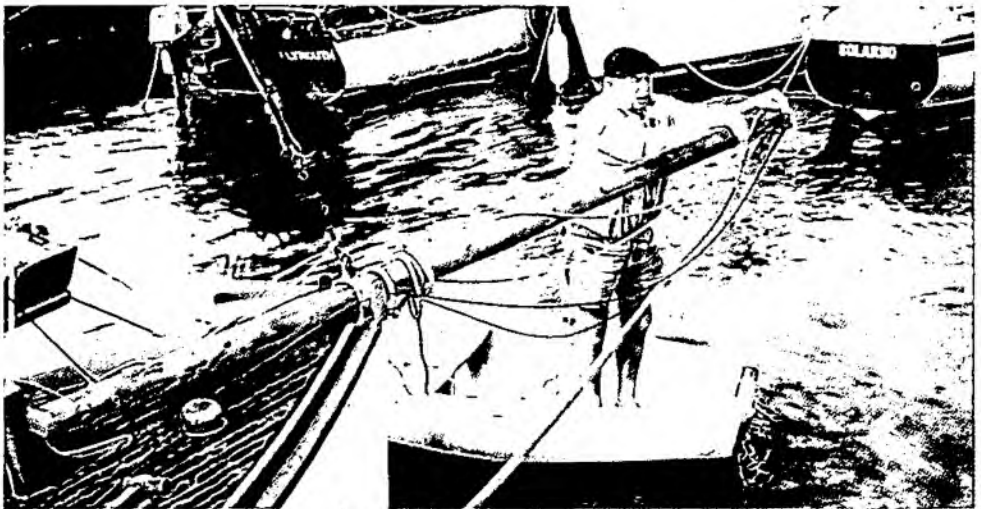
NRA EMERGENCY HOTLINE

0800 80 70 60

24 hour free emergency telephone line
LINES OPEN 7 DAYS A WEEK, 24 HOURS A DAY

Help the
NATIONAL RIVERS AUTHORITY
to protect the
water environment

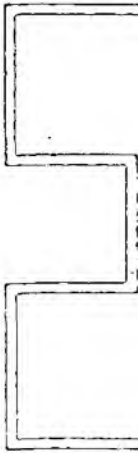


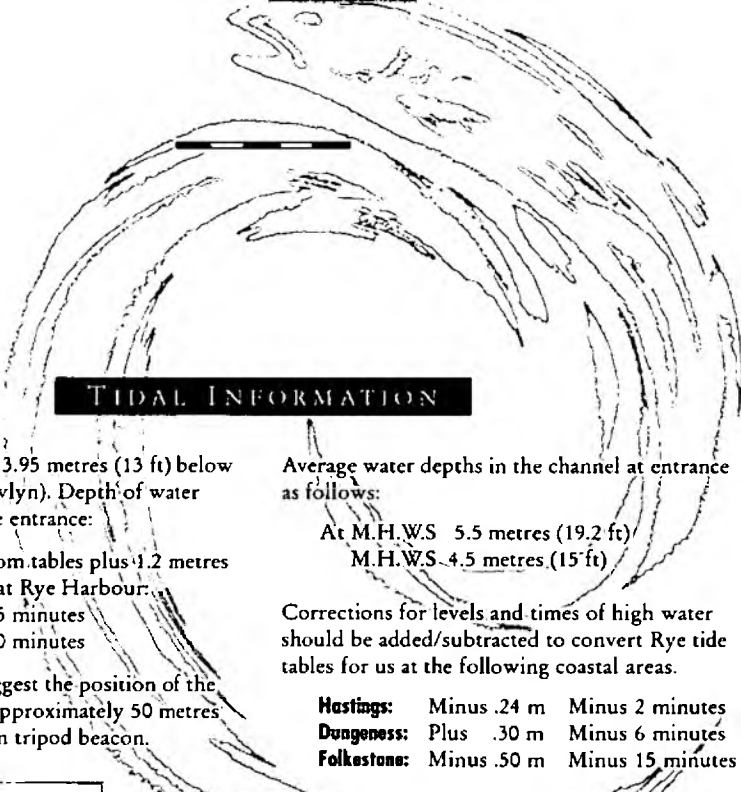


side of the channel (international regulations) keeping clear of any sailing dinghies that may be encountered. When berthing at the harbour office, vessels should turn and "stem the tide" berthing at the nearest available ladder to the office. Fenders/slipper boards are not normally practical with fast rising tide and could become a hazard (See tide tables leaflet at back).

Distances from Rye

| | |
|--------------------|-------------------|
| Boalogue: | 32 Nautical miles |
| Folkstone: | 22 Nautical miles |
| Dover: | 26 Nautical miles |
| Ramsgate: | 41 Nautical miles |
| Newhaven: | 32 Nautical miles |
| Brighton: | 39 Nautical miles |
| Dunkirk: | 63 Nautical miles |
| St. Valary: | 55 Nautical miles |
| Eastbourne: | 21 Nautical miles |





TIDAL INFORMATION

Chart Datum at Rye is 3.95 metres (13 ft) below Ordnance Datum (Newlyn). Depth of water over the sand bar at the entrance:

Predicted height from tables plus 1.2 metres

Duration of mean rise at Rye Harbour:

Springs: 3 hours 15 minutes

Neaps: 5 hours 00 minutes

Latest observations suggest the position of the channel has stabilised approximately 50 metres eastward of the Western tripod beacon.



Average water depths in the channel at entrance as follows:

At M.H.W.S. 5.5 metres (19.2 ft)

M.H.W.S. 4.5 metres (15 ft)

Corrections for levels and times of high water should be added/subtracted to convert Rye tide tables for us at the following coastal areas.

Hastings: Minus .24 m Minus 2 minutes

Dungeness: Plus .30 m Minus 6 minutes

Folkstone: Minus .50 m Minus 15 minutes

Largest vessels permitted 71.6 metres (253 ft) with maximum draft 4.12 metres (13.5 ft). These maximum lengths presently under review to permit vessels of maximum length 83 metres during daylight hours only.

It is advisable for vessels entering Rye for the first time to time their arrival during daylight hours. Although vessels can enter Rye from three hours before high water it is suggested that those unfamiliar with the port should not enter the harbour until High water minus one hour or nearer the "top of the tide". Vessels should proceed into Rye keeping close to the Starboard

WHO'S WHO

Harbour Authority

National Rivers Authority
Southern Region
Guildbourne House
Chatsworth Road
Worthing, West Sussex
Tel: (01903) 820692
Fax: (01903) 821832

Harbour Office:

Harbour Office
New Lydd Road, Camber
East Sussex, TN31 7QS
Tel: (01797) 225225
Fax: (01797) 227429

Regional General Manager: Kevin Whiteman

Harbour Master:

Captain Carl Bagwell

Pilotage Authority:

National Rivers Authority

Pilots:

Carl Bagwell
Nigel Jardine

H.M. Customs:

Senior Officer, Dover
Tel: (01304) 224348

Kent Area Office:

Millbrook House
Mill Street
East Malling, Kent
Tel: (01732) 875587
Fax: (01732) 875057

Animal Inspector:

D. Marshall, E.S.C.C.
Tel: (01273) 481825

Chairman, Harbour of Rye John Royle

Advisory Committee

Tel: (01797) 280223



Fresh Water/Power

Fresh water is available at both sites, shower and toilet facilities are available at both sites, with access codes available from Harbour staff. Electricity is not yet provided at visitors moorings. Power leads and portable generators can be obtained from the Harbour Master for vessels moored at the Harbour office moorings.

Slipways/Repairs

A public users slipway is provided at Rye harbour on the West side of the River Rother. Slipway can be used for launching a recovering craft. Car and trailer parking is available within

easy reach. Details of charges available from Harbour Master. Arrangements for repairs can be made through boatyards or Harbour Master.

Gas Oil/Petroleum

Gas oil is available from Sandrock Marine situated in the Rock Channel, generally open normal office hours only. Further supplies from Floating barge in the middle channel. Tides permitting, the barge is self operated 24 hours per day with "Smart" card operation (obtained by arrangement with operator) and tokens available from local chandlers and/or Harbour Master. Petroleum and diesel can be purchased from local garages at both Rye Harbour village and the town of Rye.

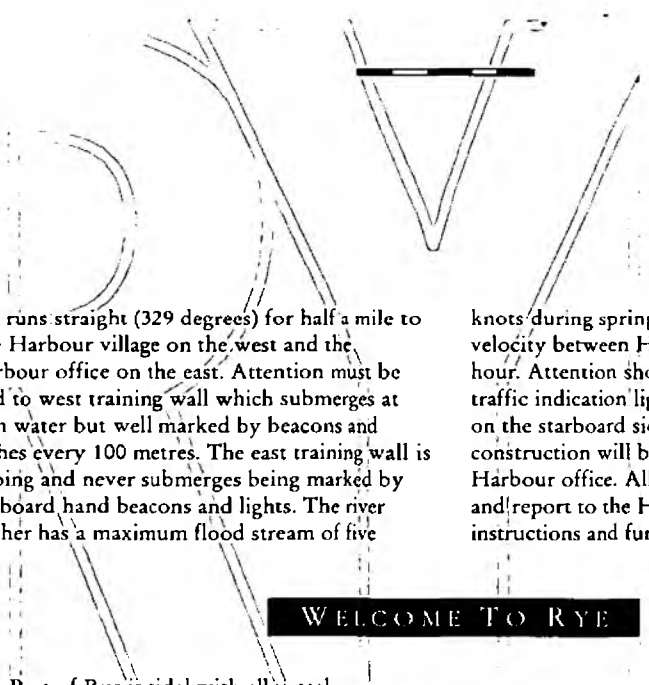
Chandlery and Provisions

Details from Harbour Master

Communications

British rail station within easy walk of town moorings. Journey time to London (Changing at Ashford) approximately 1 hour 45 minutes. Times of trains available from British Rail passenger enquiries (01732 770111) or Harbour Master. International airports at Gatwick (65 miles) and Heathrow (102 miles). Both approximately 1 hour 30 minutes by road.





and runs straight (329 degrees) for half a mile to Rye Harbour village on the west and the Harbour office on the east. Attention must be paid to west training wall which submerges at high water but well marked by beacons and withes every 100 metres. The east training wall is sloping and never submerges being marked by starboard hand beacons and lights. The river Rother has a maximum flood stream of five

knots during spring tides and reaches maximum velocity between H.W. -2 hours and H.W. -1 hour. Attention should be paid to commercial traffic indication lights above the Harbour office on the starboard side. Visitors staging of timber construction will be visible just above the Harbour office. All new arrivals must stop here and report to the Harbour Master for berthing instructions and further navigational information.

WELCOME TO RYE

The Port of Rye is tidal with all vessels progressively taking the ground at low water. Vessels should not approach the port more than two hours before or 3 hours after high water. Vessels generally dry into soft mud but hard standing can be provided on request. All arriving vessels are requested to stop temporarily at the holding berths adjacent the Harbour office and report to the Harbour Master.

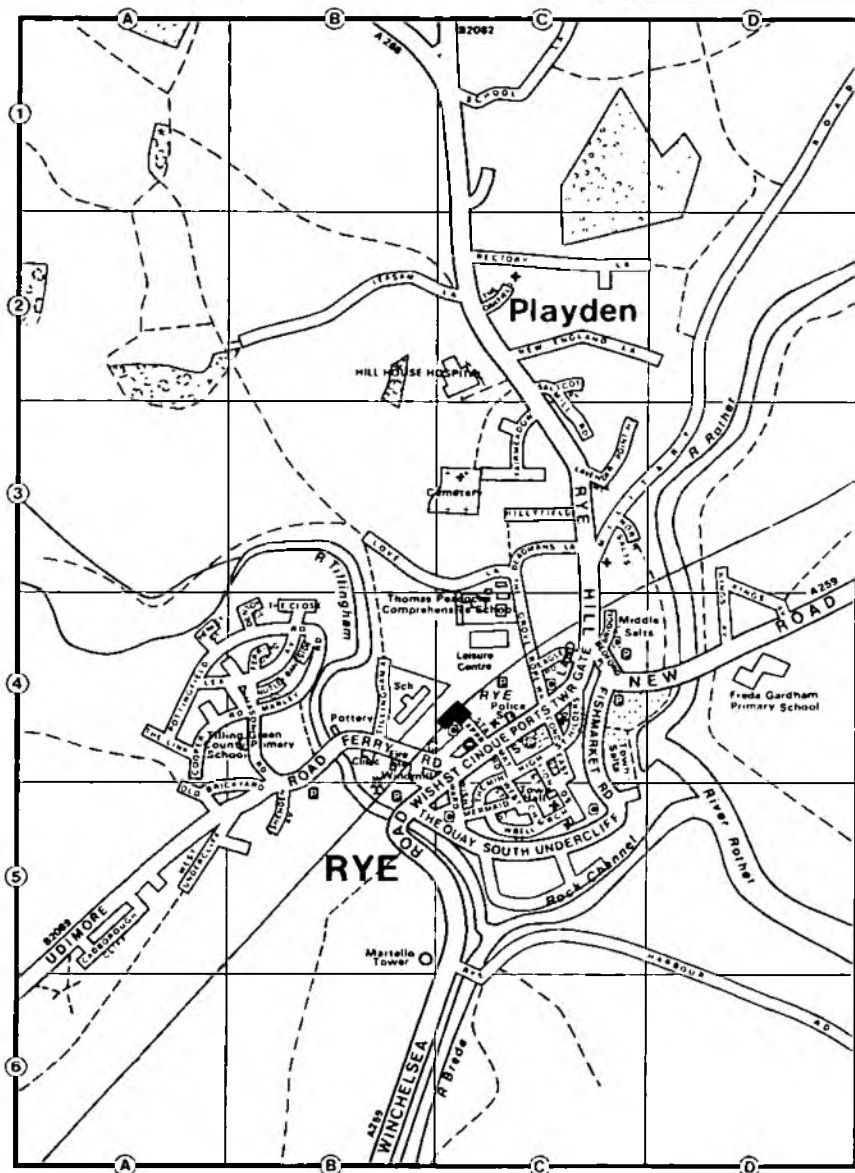
Moorings

Visiting craft up to a length of 15 metres can generally be accommodated at the Strand Quay moorings, Rye Town. Larger vessels are advised to make prior arrangements with the harbour master before arrival. Moorings in Rye (some 3



miles from the sea) comprise steel piled wall with good timber fendering and access ladders placed every 15 metres. Moorings for vessels up to a maximum of 25 metres provided at the harbour office (1 mile from the sea) against timber piles.

RYE TOWN MAP



Reproduced by permission of Estate Publications. © Estate Publications. Crown Copyright reserved.
 Based upon Ordnance Survey mapping with the permission of the controller of HMSO © Crown Copyright.

© National Rivers Authority (1995) First published (March 1995)

All rights reserved. No parts of this publication may be reproduced, stored in a retrieval system or otherwise transmitted, in any form or by any means, electronic, mechanical, photocopying, recording or otherwise without the prior permission of the National Rivers Authority.

The document was designed by GSB Associates and printed by Geerings on Sequel Satin TCF.

The NRA is committed to the principles of stewardship and sustainability. In addition to pursuing its statutory responsibilities as Guardians of the Water Environment, the NRA will aim to establish and demonstrate wise environmental practice throughout all its functions.

APPROACHES TO PORT OF RYE

Rye Bay

Vessels entering Rye Bay from the east (Admiralty Charts Nos 2451, 536, 1991) should follow the coast from Dungeness or Fairlight if approaching from the west, keeping at least two miles off shore (greater than 6 metres) until Rye Fairway Buoy is sighted. (Spherical R.W. Fl ev. 10 secs), position 149 degrees true x 1.8 miles from the harbour entrance. Care should be taken as numerous anchored gill nets are present in the bay usually marked at either end by dan buoys. Minimum depth of water over these nets not usually less than 2 metres. The Ministry of



Defence operate a firing range to the east of the harbour extending three miles along the coast with prohibited areas to seaward varying in distance from 1.5 miles to 2.5 miles. Firing times are available from the Harbour Master with civilian range

safety patrol boats on station available to give mariners advice. (VHF ch. 73) Rye Harbour Radio keeps listening watch on VHF channel 14 during the high water period. It is advisable to contact the port control before entering the harbour to obtain information on port commercial movements.

Harbour Entrance

The Harbour entrance is 42 metres wide and is recognised by a conspicuous red painted tripod beacon (Fl red ev. 5 secs) 30 metres seaward of the West Groyne. The East Pier (submerges at High water springs) is a further 240 metres inland and is conspicuous by a square, steel tower with green boards to top. (Quick Fl. 9 ev. 15 secs). The east pier tower is fitted with high visibility noticeboard floodlit during hours of darkness. East pier marked by four (unlit) starboard hand beacons. There are a strong eddies inside the east pier during flood streams and mariners should be prepared to apply correcting helm (usually to starboard) when passing the east pier.

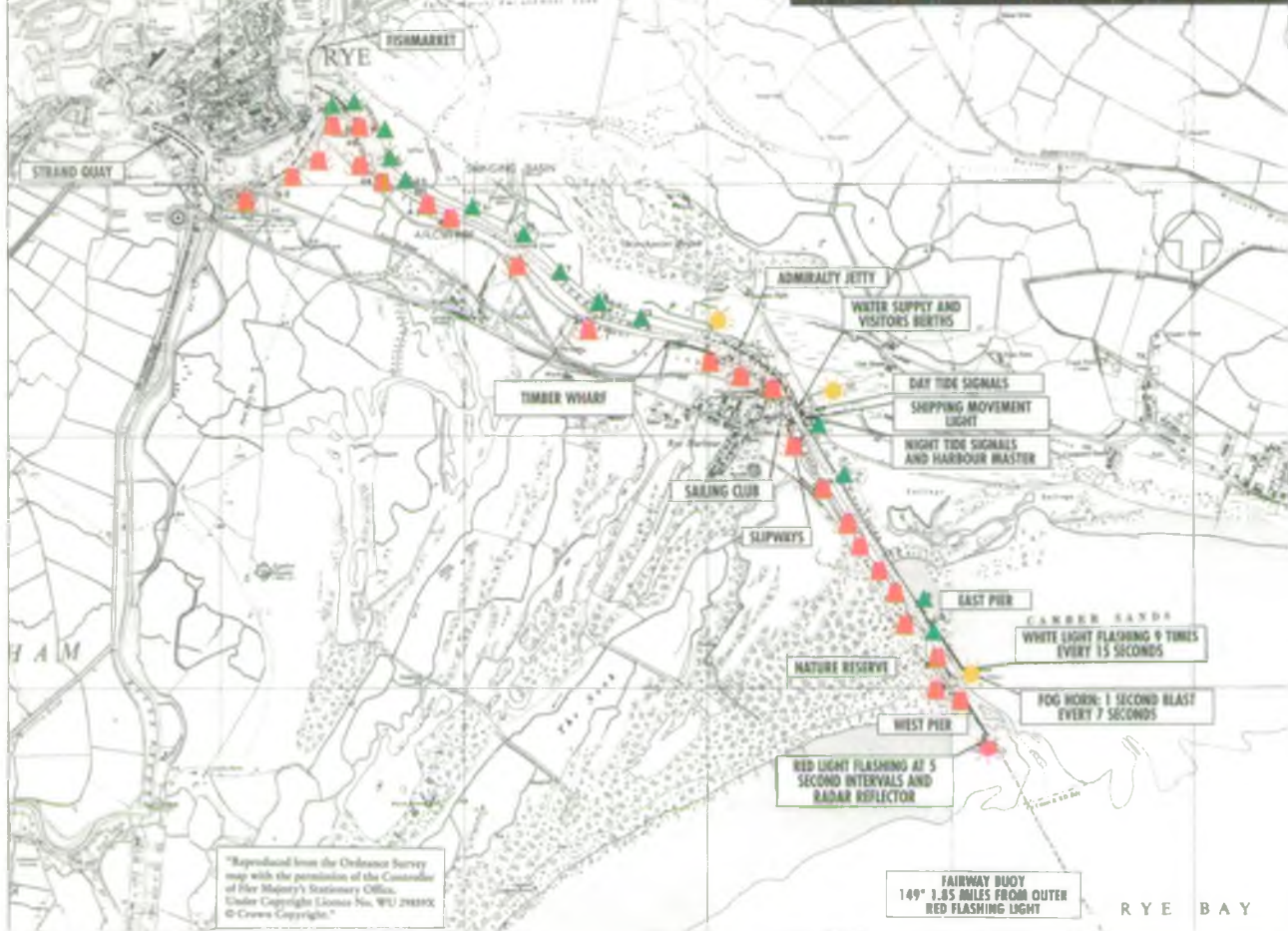
Outer Channel

Inside the piers the channel narrows to 30 metres



RYE MB & PH

RYE HARBOUR APPROACH



"Reproduced from the Ordnance Survey map with the permission of the Controller of Her Majesty's Stationery Office. Under Copyright License No. WU 298392 © Crown Copyright."

RED LIGHT FLASHING AT 5 SECOND INTERVALS AND RADAR REFLECTOR

CANNON SANDS
WHITE LIGHT FLASHING 9 TIMES EVERY 15 SECONDS

ROG HORN: 1 SECOND BLAST EVERY 7 SECONDS

FAIRWAY BUOY
149° 1.85 MILES FROM OUTER RED FLASHING LIGHT

RYE BAY

SAILORS GUIDE TO



NRA

*National Rivers Authority
Southern Region*